

Corais

Flauta Transversal

Clarinete em B \flat

Saxofone Soprano

Saxofone Contralto

Trompete em B \flat

Trombone

Guitarra elétrica

Baixo elétrico

Claves

Coral I

Dm Am Dm G Dm C F D Gm D Eb Gm Gm

Dm Am Dm G Dm C F D Gm D Eb Gm Gm

14

Coral II

Fl.

Cl. em B \flat

Sax. Sop.

A. Sax

Tpt. em B \flat

Tbn.

Gui. El.

B. El.

Clv.

A C Em C \sharp m D A B \flat E E \flat F C \sharp G \sharp m Bm C \sharp

8

A C Em C \sharp m D A B \flat E E \flat F C \sharp G \sharp m Bm C \sharp

28 Coral III Coral IV

Fl.

Cl. em B \flat

Sax. Sop.

A. Sax

Tpt. em B \flat

Tbn.

Gui. El.

B. El.

Clv.

F \sharp m Coral III D7/F \sharp Gm9 D7
 Gm Adim7/G Cm7 B \flat 7 Asus4Am Gm/D Gsus/D
 Cm7 Fm7 B \flat 7

F \sharp m Coral III D7/F \sharp Gm9 D7
 Gm Adim7/G Cm7 B \flat 7 Asus4Am Gm/D Gsus/D
 Cm7 Fm7 B \flat 7

Fl.

Cl. em B \flat

Sax. Sop.

A. Sax

Tpt. em B \flat

Tbn.

Gui. El.

B. El.

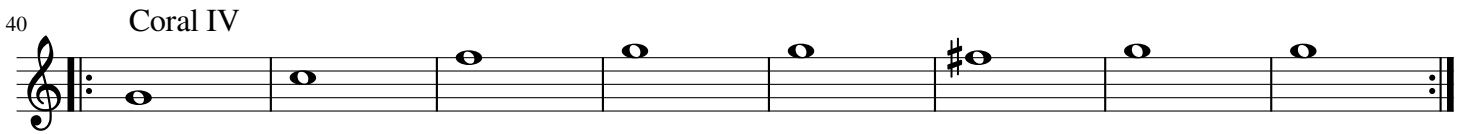
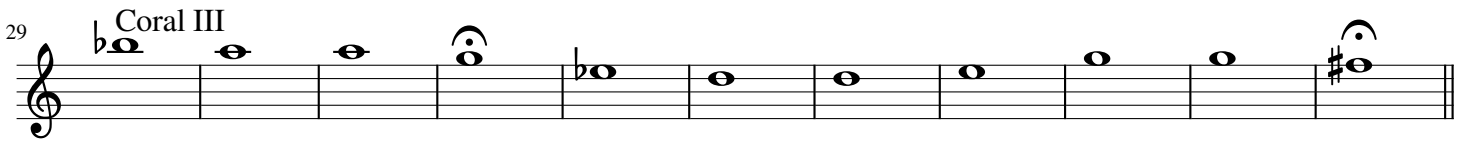
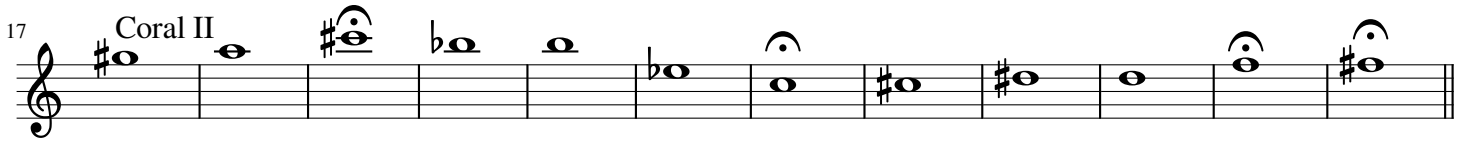
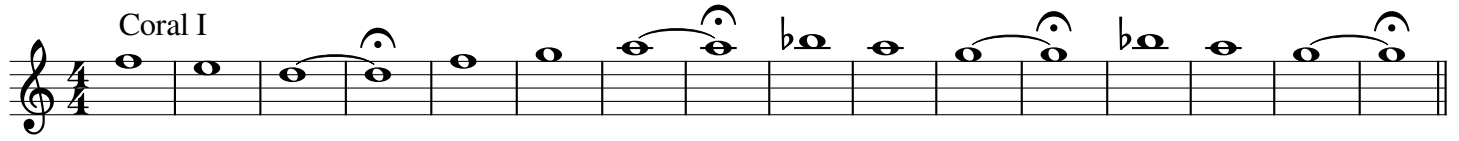
Clv.

E \flat 7 Am75 \flat D7 Gm G7

E \flat 7 Am75 \flat D7 Gm G7

Flauta Transversal

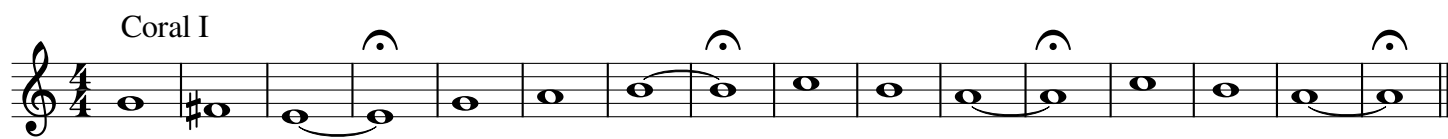
Corais



Saxofone Soprano

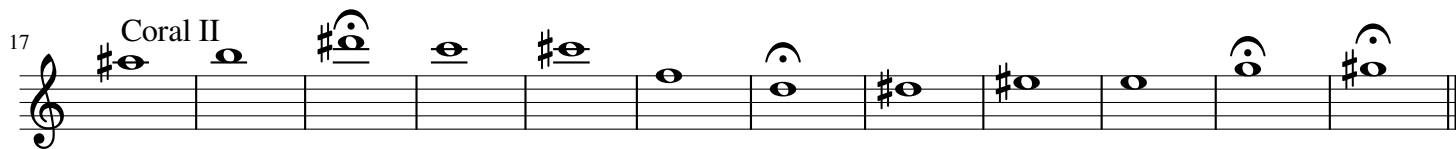
Corais

Coral I



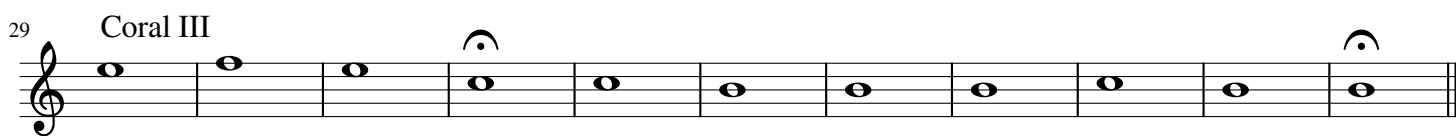
Musical notation for Coral I, starting at measure 1. The key signature has one sharp (F#) and the time signature is 4/4. The melody consists of quarter notes with accents: F#4, E4, D4, C4, B3, A3, G3, F#3, E3, D3, C3, B2, A2, G2, F#2.

17 Coral II



Musical notation for Coral II, starting at measure 17. The melody consists of quarter notes with accents: F#4, E4, D4, C4, B3, A3, G3, F#3, E3, D3, C3, B2, A2, G2, F#2.

29 Coral III



Musical notation for Coral III, starting at measure 29. The melody consists of quarter notes with accents: F#4, E4, D4, C4, B3, A3, G3, F#3, E3, D3, C3, B2, A2, G2, F#2.

40 Coral IV



Musical notation for Coral IV, starting at measure 40. The melody consists of quarter notes with accents: F#4, E4, D4, C4, B3, A3, G3, F#3, E3, D3, C3, B2, A2, G2, F#2. The piece ends with a double bar line and repeat dots.

Saxofone Contralto

Corais

Coral I

A musical staff in treble clef with a 4/4 time signature. It contains a sequence of notes: G4 (sharp), A4, B4, C5 (sharp), D5 (sharp), E5 (sharp), F5 (sharp), G5, A5, B5, C6, D6, E6, F6, G6, A6, B6, C7. There are four fermatas over the notes C5, G5, C6, and G6.

17 Coral II

A musical staff in treble clef with a 4/4 time signature. It contains a sequence of notes: G4 (sharp), A4, B4, C5 (sharp), D5 (sharp), E5 (sharp), F5 (sharp), G5, A5, B5, C6, D6, E6, F6, G6, A6, B6, C7. There are four fermatas over the notes C5, G5, C6, and G6.

29 Coral III

A musical staff in treble clef with a 4/4 time signature. It contains a sequence of notes: G4, A4, B4, C5 (sharp), D5, E5, F5 (sharp), G5, A5, B5, C6, D6, E6, F6, G6, A6, B6, C7. There are two fermatas over the notes C5 and C7.

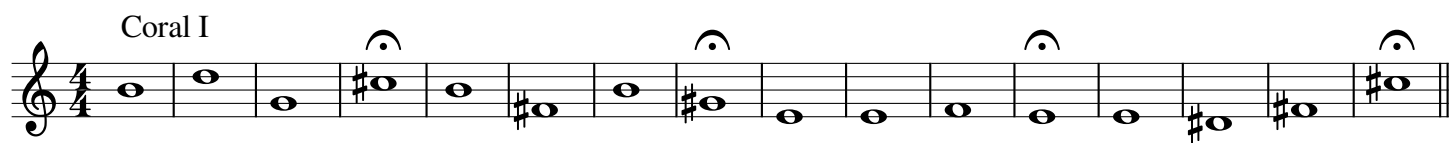
40 Coral IV

A musical staff in treble clef with a 4/4 time signature. It contains a sequence of notes: G4, A4, B4, C5, D5, E5, F5, G5, A5, B5, C6, D6, E6, F6, G6, A6, B6, C7. The staff begins with a double bar line and repeat sign, and ends with a double bar line and repeat sign.

Trompete em B \flat

Corais

Coral I



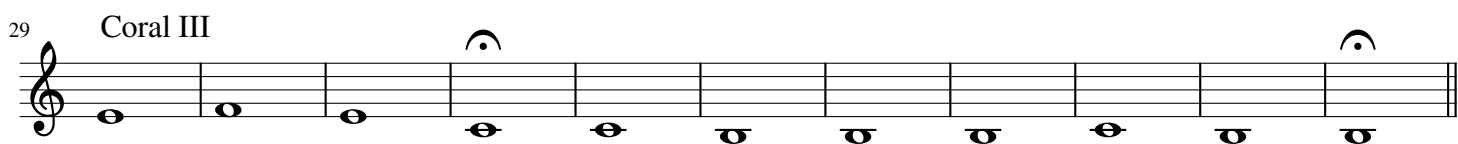
Musical staff for Coral I, measures 1-16. The staff is in 4/4 time and contains a sequence of notes with various accidentals and phrasing slurs.

17 Coral II



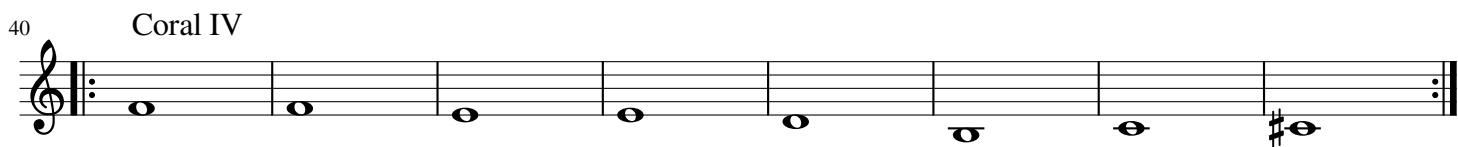
Musical staff for Coral II, measures 17-32. The staff contains a sequence of notes with various accidentals and phrasing slurs.

29 Coral III



Musical staff for Coral III, measures 29-38. The staff contains a sequence of notes with various accidentals and phrasing slurs.

40 Coral IV

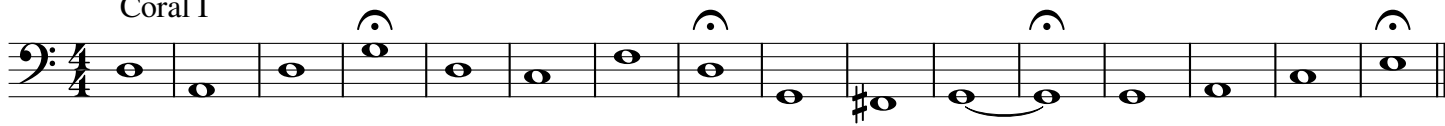


Musical staff for Coral IV, measures 40-47. The staff contains a sequence of notes with various accidentals and phrasing slurs.

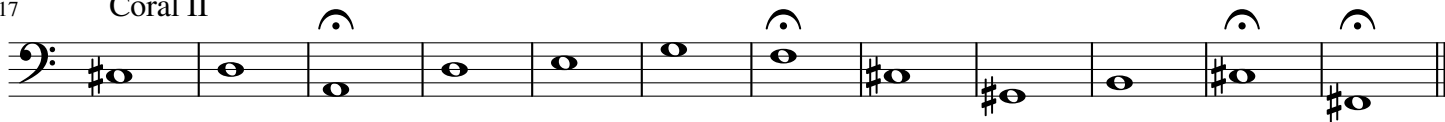
Trombone

Corais

Coral I



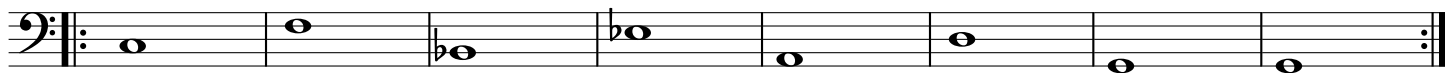
17 Coral II



29 Coral III



40 Coral IV



Coral I

Dm Am Dm G Dm C F D Gm D Eb Gm Gm A C Em

Coral II

C#m D A Bb E Eb F C# G#m Bm C# F#m

Coral III

Gm Adim7/G D7/F# Gm9 Cm7 Bb7 Asus4 Am Gm/D Gsus/D D7

Coral IV

Cm7 Fm7 Bb7 Eb7 Am75b D7 Gm G7

Baixo elétrico

Corais

Coral I

Dm Am Dm G Dm C F D Gm D Eb Gm Gm A C Em

Musical staff for Coral I, measures 1-16. The staff is in bass clef with a 4/4 time signature. It contains a sequence of notes corresponding to the chords listed above: Dm, Am, Dm, G, Dm, C, F, D, Gm, D, Eb, Gm, Gm, A, C, Em.

Coral II

C#m D A Bb E Eb F C# G#m Bm C# F#m

Musical staff for Coral II, measures 17-28. The staff is in bass clef with a 4/4 time signature. It contains a sequence of notes corresponding to the chords listed above: C#m, D, A, Bb, E, Eb, F, C#, G#m, Bm, C#, F#m.

Coral III

Gm Adim7/G D7/F# Gm9 Cm7 Bb7 Asus4 Am Gm/D Gsus/D D7

Musical staff for Coral III, measures 29-39. The staff is in bass clef with a 4/4 time signature. It contains a sequence of notes corresponding to the chords listed above: Gm, Adim7/G, D7/F#, Gm9, Cm7, Bb7, Asus4, Am, Gm/D, Gsus/D, D7.

Coral IV

Cm7 Fm7 Bb7 Eb7 Am75b D7 Gm G7

Musical staff for Coral IV, measures 40-47. The staff is in bass clef with a 4/4 time signature. It contains a sequence of notes corresponding to the chords listed above: Cm7, Fm7, Bb7, Eb7, Am75b, D7, Gm, G7.

Claves

Corais

