

Exercício

Flauta Transversal

Clarinete em B \flat

Saxofone Soprano

Saxofone Contralto

Trompete em B \flat

Trombone

Guitarra elétrica

Baixo elétrico

Claves

The image shows a musical score for a jazz exercise. It consists of nine staves, each representing a different instrument. The instruments are: Flauta Transversal (Transverse Flute), Clarinete em B \flat (B \flat Clarinet), Saxofone Soprano (Soprano Saxophone), Saxofone Contralto (Alto Saxophone), Trompete em B \flat (B \flat Trumpet), Trombone, Guitarra elétrica (Electric Guitar), Baixo elétrico (Electric Bass), and Claves. The score is written in 4/4 time and features a key signature of one flat (B \flat). The Flauta Transversal part is in the treble clef with a key signature of one flat. The Clarinete em B \flat , Saxofone Soprano, Trompete em B \flat , and Guitarra elétrica parts are in the treble clef with a key signature of one flat. The Saxofone Contralto part is in the treble clef with a key signature of one sharp (F \sharp). The Trombone part is in the bass clef with a key signature of one flat. The Baixo elétrico part is in the bass clef with a key signature of one flat. The Claves part is in the bass clef with a key signature of one flat. The Flauta Transversal part has a dynamic marking of ff at the beginning. The Guitarra elétrica part has a dynamic marking of 8 at the beginning. The Claves part has a dynamic marking of ff at the beginning. The score is divided into four measures by vertical bar lines.

5

Fl.

Cl. em B \flat

Sax. Sop.

A. Sax

Tpt. em B \flat

Tbn.

Gui. El.

B. El.

Clv.

Detailed description: This is a page of a musical score for a woodwind and brass ensemble, starting at measure 5. The score is written in a key signature of one flat (B-flat) and a common time signature (C). The instruments are arranged in nine staves from top to bottom: Flute (Fl.), Clarinet in B-flat (Cl. em B \flat), Soprano Saxophone (Sax. Sop.), Alto Saxophone (A. Sax), Trumpet in B-flat (Tpt. em B \flat), Trombone (Tbn.), Euphonium (Gui. El.), Baritone (B. El.), and Cymbals (Clv.). The Flute, Clarinet, Soprano Saxophone, Alto Saxophone, Trumpet, Trombone, Euphonium, and Baritone parts all play a melodic line consisting of eighth and sixteenth notes, often beamed together. The Cymbals part is marked with a double bar line and a vertical line, indicating it is silent throughout the measures shown.

9

Fl.

Cl. em B \flat

Sax. Sop.

A. Sax

Tpt. em B \flat

Tbn.

Gui. El.

B. El.

Clv.

Detailed description: This is a page of a musical score for a woodwind and brass ensemble, starting at measure 9. The score is written for ten instruments: Flute (Fl.), Clarinet in B-flat (Cl. em B \flat), Saxophone Soprano (Sax. Sop.), Alto Saxophone (A. Sax), Trumpet in B-flat (Tpt. em B \flat), Trombone (Tbn.), Euphonium (Gui. El.), Baritone (B. El.), and Cymbal (Clv.). The key signature is one flat (B-flat), and the time signature is 4/4. The flute part features a complex melodic line with many sixteenth and thirty-second notes. The other instruments play a rhythmic accompaniment of eighth and sixteenth notes. The cymbal part consists of a simple pattern of four eighth notes per measure.

13

Fl.

Cl. em B \flat

Sax. Sop.

A. Sax

Tpt. em B \flat

Tbn.

Gui. El.

B. El.

Clv.

Detailed description: This is a page of a musical score for a woodwind and brass ensemble, starting at measure 13. The score is written for ten instruments: Flute (Fl.), Clarinet in B-flat (Cl. em B \flat), Soprano Saxophone (Sax. Sop.), Alto Saxophone (A. Sax), Trumpet in B-flat (Tpt. em B \flat), Trombone (Tbn.), Euphonium (Gui. El.), Baritone (B. El.), and Cymbals (Clv.). The music is in a key signature of one flat (B-flat major or D minor) and a common time signature. The woodwinds and brass parts feature a rhythmic pattern of eighth notes, often beamed in groups of four. The flute part is in the treble clef, while the other instruments are in their respective clefs (treble for Flute, Clarinet, Saxophones, Trumpet, Euphonium, and Baritone; bass for Trombone and Baritone). The cymbal part consists of a series of short, rhythmic strikes. The page number '13' is located at the top left of the first staff.

17

Fl.

Cl. em B \flat

Sax. Sop.

A. Sax

Tpt. em B \flat

Tbn.

Gui. El.

B. El.

Clv.



Clarinete em B \flat

Exercício



Saxofone Soprano

Exercício





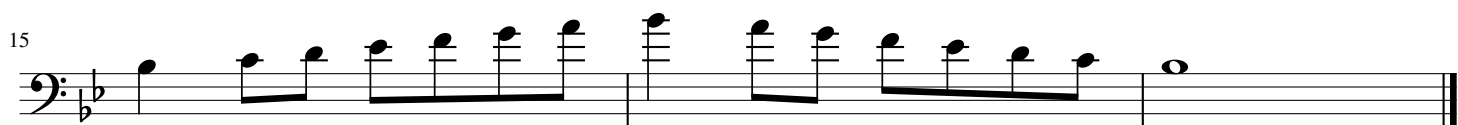
Trompete em B \flat

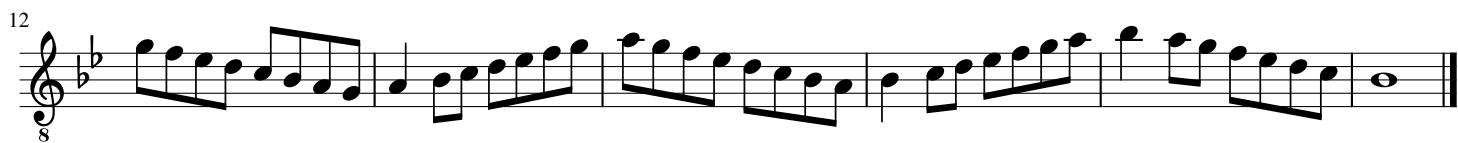
Exercício

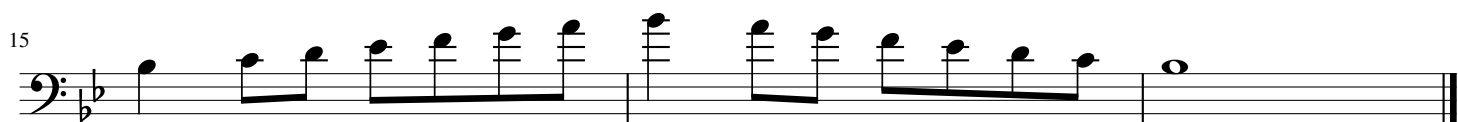


Trombone

Exercício







Claves

Exercício

